



# WISH

ACADEMY HIGH SCHOOL  
A 9-12 CHARTER SCHOOL

**WISH OWLS**  
[www.wishcharter.org](http://www.wishcharter.org)

## ADMINISTRATION

Dr. Kimberly Johnson, Principal - [kjohnson@wishcharter.org](mailto:kjohnson@wishcharter.org)  
Mayra Zendejas, Assistant Principal - [mzendejas@wishcharter.org](mailto:mzendejas@wishcharter.org)  
Dr. Jennifer Branch, Assistant Principal - [jbranch@wishcharter.org](mailto:jbranch@wishcharter.org)

## COUNSELORS

Sheree Rhaburn, 9th/10th grade Counselor - [srhaburn@wishcharter.org](mailto:srhaburn@wishcharter.org)  
Anna Szczubelek, 11th/12th grade Counselor - [aszczubelek@wishcharter.org](mailto:aszczubelek@wishcharter.org)

## SCHOOL DESCRIPTION

WISH Academy High School (WAHS) is a public charter school located in the Westchester neighborhood of Los Angeles. WAHS strives to promote every student's personal success academically and socially under the philosophy that each learner's pathway to progress and success relies on meaningful relationships between the community, parents/caregivers, and all WAHS stakeholders.

## DUAL ENROLLMENT PARTNERSHIPS

WISH Academy High School partners with local community colleges to offer dual enrollment opportunities for students. Students are able to take dual enrollment Engineering courses through El Camino College. Our Health course is a dual enrollment offering through West Los Angeles College. Students also take various courses at Santa Monica College.

### POPULAR DUAL ENROLLMENT COURSES:

- Health
- Psychology
- Economics
- US Government
- Early Childhood Education
- Communication Studies
- Art History

## WISH ATHLETICS - CIF

WISH Academy offers the following sports programs:  
Fall - G. Flag Football, G. Volleyball, Cross Country, G. Tennis  
Winter - Basketball, Soccer, Sideline Cheer  
Spring - Track & Field, Baseball, Softball, B. Tennis, B. Volleyball, Competitive Cheer, Swimming



## QUICK FACTS

**1:12**

**Student - Faculty ratio**

**95%**

**College enrollment rate**

**79%**

**Students accepted to the UC system**  
(State average is 67%)

**100%**

**Graduation rate**  
(State average is 84%)

**17+**

**Clubs & Activities**

**66**

**Zip codes represented**



## PATHWAYS

All scholars are encouraged but not required to take 4 years of pathway courses. Although it is recommended that scholars continue within the same pathway, they do have the option to switch pathways. Scholars who complete 4 years of courses within the same pathway earn a pathway cord for graduation. Our four pathways are:

- Engineering
- Biomedical Science
- Visual/Performing Arts
- Social Justice/Civics

## PLTW ENGINEERING

- Engineering Essentials
- Introduction to Engineering Design
- Principles of Engineering Design
- Digital Electronics
- Computer Integrated Manufacturing

## PLTW BIOMEDICAL SCIENCE

- Engineering Essentials
- Principles of Biomedical Science
- Human Body Systems
- Medical Interventions

## VISUAL/PERFORMING ARTS

- Intro to Theater
- Acting I
- Play Production
- Guitar (Beginning or Advanced)
- String Ensemble (Beginning or Advanced)
- Digital Composition of Music (Beginning or Advanced)
- Choir (Chamber, Concert, or Advanced)
- Contemporary Music Ensemble
- Animation
- Digital Media
- Filmmaking

## LIBERAL ARTS / CIVICS

- Reel History Through Film
- Constitutional Law
- Criminal Justice
- Introduction to Social Sciences
- Cultural and Linguistic Anthropology

## HONORS COURSES

Designated "H" on high school transcript

We started offering Honors courses in English and Math during the 20-21 school year. In the 21-22 school year, we expanded our honors offerings to include all courses in English, Math, Science, History/Social Science, Foreign Language, Engineering, Biomedical Science, Social Justice/Civics, and Theater.

## ADVANCED PLACEMENT COURSES

Designated "AP" on high school transcript

- English Language and Composition
- United States History
- English Literature and Composition
- United States Government
- Calculus AB
- Calculus BC
- PreCalculus
- Biology
- Computer Science Principles
- Music Theory



## AP Exams

	2021	2022	2023
Total AP Students	36	36	49
Number of Exams	77	61	97
AP Students with Scores 3+	10	16	32
% of Total AP Students with Scores 3+	27.78	44.44	65.31

## Mean Score by AP Exam and Year

AP Course	2021	2022	2023
Biology	-	-	1.57
Calculus AB	2	3	4.2
Calculus BC	2.4	-	4
Chemistry	-	1	1.88
English Language & Composition	2.08	2.45	3.27
English Lit. & Composition	2.06	2.29	3.05
Spanish Language and Culture	2.5	-	-
US Government and Politics	1.64	1.83	2.20
US History	1.29	2.42	2.70

## LIST OF COLLEGES STUDENTS HAVE BEEN ACCEPTED TO

Alabama State University  
 Arizona State University  
 Bard College  
 Cal Maritime  
 Cal Poly - Humboldt  
 Cal Poly - Pomona  
 Cal Poly SLO  
 Chapman University  
 Charles R. Drew University  
 Clark Atlanta University  
 Colorado State  
 CSU - Bakersfield  
 CSU - Channel Islands  
 CSU - Chico  
 CSU - Dominguez Hills  
 CSU - Fullerton  
 CSU - Los Angeles  
 CSU - Monterey Bay  
 CSU - Northridge  
 CSU - Sacramento  
 CSU - San Bernardino  
 CSU - San Marcos  
 CSU - Sonoma  
 De Paul University  
 Dillard University  
 Drexel University  
 El Camino College  
 Fresno State University  
 Fordham University  
 Gonzaga University  
 Hampton University  
 Hawaii Pacific University  
 Howard University  
 Indiana University

Jackson State University  
 Langston University  
 Lewis and Clark College  
 Los Angeles City College  
 Los Angeles Trade Tech  
 Louisiana State University  
 Loyola Chicago University  
 Loyola Marymount University  
 Michigan State  
 Montclair State University  
 Morehouse College  
 Mt. St. Mary's College  
 Northeastern University  
 Northern Arizona University  
 Ohio State  
 Otis College of Art and Design  
 Pacific  
 Penn State  
 Purdue University  
 Rensselaer Polytechnic Institute  
 Rochester Institute of Technology  
 Rutgers University  
 Sacramento State  
 Saint Augustine's University  
 Saint Mary's College  
 San Diego State University  
 San Francisco State University  
 Santa Monica College  
 Sarah Lawrence College  
 Seattle University  
 UC - Berkeley  
 UC - Davis  
 UC - Irvine  
 UC - Los Angeles

UC - Merced  
 UC - Riverside  
 UC - San Diego  
 UC - Santa Barbara  
 UC - Santa Cruz  
 University of Alabama  
 University of Arizona  
 University of Colorado  
 University of Connecticut  
 University of Denver  
 University of Hartford  
 University of Hawaii, Manoa  
 University of La Verne  
 University of Maryland  
 University of New Mexico  
 University of Oregon  
 University of Portland  
 University of Redlands  
 University of San Diego  
 University of San Francisco  
 University of Southern California  
 University of Utah  
 University of Virginia  
 University of Wisconsin  
 Washington College  
 Washington State University  
 West Los Angeles College  
 Westmont College  
 Whitman College  
 Whittier College  
 Willamette University  
 Woodbury University  
 Xavier University of Louisiana



Students are ranked by weighted cumulative GPA according to their grade level. The high school transcript is a weighted 9-12 academic grade point average. One extra point is given for each 9th - 12th Honors, Advanced Placement, or Dual Enrollment course with a grade of C- or higher.

Letter Grade	% Grade	4.0 Scale	Letter Grade	% Grade	4.0 Scale	Letter Grade	% Grade	4.0 Scale
A+	97-100	4.0	A	93-96	4.0	A-	90-92	3.7
B+	87-89	3.3	B	83-86	3.0	B-	80-82	2.7
C+	77-79	2.3	C	73-76	2.0	C-	70-72	1.7

Five credits are awarded for each successfully completed class (C- or higher) each semester. Advisory classes are only awarded 1 credit per semester. 220 credits are required to graduate. WISH Academy graduation requirements exceed the A-G requirements.



The award-winning WISH Academy High School is a free, public, independent charter schools authorized by the Los Angeles Unified School District. More than 275 diverse students from the Westchester area and nearby are part of the WISH family, receiving a whole scholar approach to education guided by a commitment to social justice through inclusivity, led by approximately 25 outstanding educators. Find out more at [www.wishcharter.org](http://www.wishcharter.org).

## Mission and Philosophy

The WISH mission is to maximize every scholar's learning potential within an atmosphere of caring and belonging. Our instructional philosophy is grounded in constructivism and embeds the concepts of inquiry, project-based learning, hands-on learning, meaningful instructional activities, systematic instruction, and a collaborative group of professionals focused on making the learning environment exciting for students. Evidence-based teaching strategies tailor efforts to meet the developmental needs of every individual.

In April 2013, WISH was named a SWIFT Knowledge Development Site by the University of Kansas due to exemplary work implementing our core tenets – one of only six schools in the US selected for this auspicious designation. As a TK-12th grade demonstration site, WISH has hosted ministers of education, state education leaders, superintendents, visiting professors, administrators, and teachers from 26 US States and 16 countries.

## Whole Scholar Approach

As part of our commitment to a whole scholar approach to education, the WISH faculty and parent association work together to raise additional funds to ensure all students receive high-quality art, advanced music instruction in vocal, instrumental and theory practices, physical education, and technology instruction.

*"Tell me, I forget. Show me, I remember. Involve me, I understand."* -Chinese proverb

WISH adheres to the idea that people learn best by utilizing the principles of the constructivist theory. Constructivism emphasizes an internal-oriented approach in which by asserting one's knowledge and participating in the learning process itself, learning is constructed by the learner's interpretation of their own experiences. Scholars benefit from working collaboratively in groups to hear different perspectives and accomplish the learning tasks with the help of their peers and experts. Learning is an active process facilitated when students express and evaluate their thinking.

## Core tenets of the WISH model

- **Optimal Class Size:** All WISH Academy classes have approximately 26 students. These class sizes offer more individual attention, increased participation, and better communication between the instructors and students. Also, most classes have student teachers, fieldwork students, or paraprofessionals who provide additional learning extensions and supports by providing even more opportunities for individual support, stretch, and GATE strategies.
- **Differentiated Instruction:** WISH empowers and inspires learners to reach their highest potential. With an emphasis on academic achievement using various modalities, developing character, building technology skills, and a deep understanding of the world, WISH prepares students to be leaders.
- **Collaboration and Co-teaching:** Highly qualified, credentialed educators are partners in planning, teaching, and assessing each student. More than seventy-five percent of our instructors have an advanced post-graduate degree in their subject and several have multiple credentials or international certifications and experience. In addition to classroom teachers, teaching specialists support each grade in a co-teaching model to increase adult to student ratios, provide tailored instruction, and demonstrate best practices for all scholars. Each staff member participates in a 30-minute debriefing session daily. At this time, staff members reflect on the day and share a success, challenge, and action plan to better serve children.
- **Family Partnerships:** The WISH Community Association (WCA) comprises parents, students, teachers, staff members, and community members, working together to create a public school responsive to every student. Volunteers and family partnerships are central to WISH's success, leading to a rich and nurturing environment for children.
- **All Students Growing and Thriving:** Each class builds a robust and inclusive community together! Critical academic, social, ethical skills and attitudes develop when students with various strengths, needs, and backgrounds learn together. During the summer, teachers attend and present at professional development programs on gifted and talented education, technology, differentiated instruction, co-teaching and collaboration, and inclusivity.
- **Affiliation with Loyola Marymount University's School of Education:** Our partnership with the LMU School of Education provides the ability to collaborate, continually study, and improve the instructional model at WISH while maintaining "best practices." LMU's nationally recognized School of Education is located close to the WISH campus and WISH is a professional development school for LMU. We are currently working together to develop a series of educator training modules.

# 4 Unique Pathways

## Engineering PROJECT LEAD THE WAY

Design a home, program electronic devices, or explore algae as a biofuel source. Classes include Engineering Design, Principles of Engineering, Digital Electronics, and Aerospace Engineering.



## BioMedical Science PROJECT LEAD THE WAY

Step into the role of a medical investigator, surgeon, and biomedical engineer. This exciting pathway includes cool classes such as the Intro to Engineering Design, Principles of Biomedical Science, Human Body Systems, and Medical Interventions.



## Visual and Performing Arts Pathway

Express yourself! Participate in the amazing experience of live performance with theater, dance, and musical productions! Classes include Intro to theatre, Play Production, Acting I & II, Contemporary Music Ensemble, Guitar, and Choir/Chorus. Other VAPA options include Animation, Digital Media, and Filmmaking.



## Liberal Arts/ Civics Pathway

Do you have strong feelings about justice, poetry, and the world we live in? Then this pathway is for you! Join us for classes that include Reel History through Film, Introduction to Psychology and Sociology, Literature Analysis, Human Geography, World Religions, Constitutional Law, and Criminal Justice.

*\* Students can change their pathway throughout HS. Any Student who completes their pathway assigned courses for each year of HS will earn an academic cord to wear with their graduation regalia.*



# Advanced Learners

Students who demonstrate the academic interest to participate in accelerated courses have a variety of ways to create a curricular path that will challenge them throughout their time at WISH Academy.

## Honors & Advanced Placement Courses

### ENGLISH

Honors English 9

Honors English 10

Honors English 11

Honors English 12

AP English Language & Composition

AP English Literature & Composition

### SOCIAL STUDIES

Honors World History

AP & Honors US History

AP & Honors Government Honors Economics

### MATH

Honors Algebra 1

Honors Geometry

Honors Algebra 2

Honors Trig/Pre-Calculus

AP Calculus A-B

AP Calculus B-C

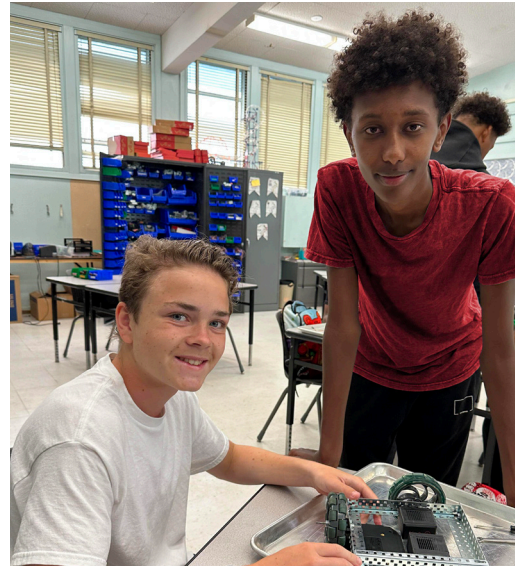
### SCIENCE

Honors Biology

AP Biology

AP Chemistry

Honors Physics



**Dual/Concurrent Enrollment**

**Articulation Agreement with El Camino College**

**National Honor Society** (for students in grades 10-12)

# College and Career Readiness



## 100% College Attendance

A core part of the WISH mission is to provide students with the instruction and life skills necessary to succeed at the college or the university of their choice, and to prepare them to embark on a career that they are passionate about pursuing!

## Resources Available to All students:

- Robust college planning supports provided throughout your WISH Academy experience.
- College preparatory courses, AP courses, Honors Courses and Dual Enrollment are available to ensure all students have the means to meet their goals.
- WISH Academy uses the Naviance College planning platform to explore options, create achievable college goals and to streamline the application process.
- Regularly scheduled in person and virtual college tours are held with prominent local, state national and international colleges and universities.
- All 12th grade students have a dedicated class to support them in completing their essays, submitting their FAFSA, obtaining letters of recommendation and providing the guidance necessary to complete their application process.





## Student Leadership

Students plan, execute and affect change by starting with their own campus, and rippling out to the larger community. Leadership opportunities are available for all students to help cultivate their real-world skills in this area.

## Link Crew

Our LINK Crew leadership program offers Seniors and Juniors the opportunity to become mentors as they are paired with Freshmen throughout the year. LINK Leaders help incoming 9th graders to adjust to high school by providing them support through peer guidance and incoming students to become involved in school activities.



## Student Ambassadors

WISH Academy scholars are invited to be spokespeople on behalf of the school by serving as student ambassadors for campus tours, school fairs, and by speaking on behalf of WISH in public venues, sharing their own experiences and helping educate prospective students and our community about the multitude and impact of WISH programs.

## Youth and Government

WISH Academy is very closely associated with the Westchester YMCA's delegation of the Youth and Government program. This national program empowers students by giving them the opportunity to experience government policies and methodologies first hand. WISH is proud to have a significant number of our students participating in the nationwide program and we are honored that a recent WISH Academy Graduate was elected as the 75th Youth Governor for the 2022-2023 program year.



# Athletics 2023-2024



## Fall

August - October

- Cross Country
- Girls Flag Football
- Girls Volleyball

## TO PARTICIPATE:

All students must be fully cleared before participating on a WISH Academy Sports Team, tryouts or summer programs.

1. Complete online participation form
2. Submit Sports Physical (within 12 months)
3. Submit CIF Packet including insurance card

## Winter

October - February

- Girls Basketball
- Boys Basketball
- Girls Soccer
- Boys Soccer
- Sideline Cheer

## SUMMER SPORTS PROGRAM:

All athletes participating on a sports team are highly encouraged to attend.

**Week 1:** Mon, July 31 – Thurs, Aug 3

**Week 2:** Mon, Aug 7 – Thurs, Aug 10

9-11am at WISH Academy

All athletes must be cleared to participate.

## Spring

February - May

- Baseball
- Boys Volleyball
- Boys Tennis
- Competition Cheer
- Girls Beach Volleyball
- Swim
- Track and Field



## CONTACT INFORMATION:

Coach Casey Wilson

Athletic Director

[wishsports@wishcharter.org](mailto:wishsports@wishcharter.org)

310-650-7618



## Requirements

All WISH Academy students are expected to complete 30 hours of service learning each academic year to meet WISH graduation requirements. Hours can be completed during the summer prior to the start of the school year and are due at the end of April, which aligns with the end of our quarter of service learning. Students are also required to complete a writing assignment based on their experience and will turn this in to their English teacher.

*“Volunteerism is the voice of the people put into action. These actions shape and mold the present into a future of which we can all be proud.”*

— Helen Dyer





# Overnight Retreat at the Pali Institute

WISH Academy starts each year with an overnight retreat at the Pali Institute. Not only does this create an amazing opportunity for students to get out in nature and jump into life changing learning experiences, but it is a great way for students to connect with each other and create bonds that will carry them through their years at WISH.



Dress Code Item
<p style="text-align: center;"><b>TOPS</b></p> <p>Solid Red, Black, White, or Blue (no aqua/turquoise) or WISH Wear</p>
<p style="text-align: center;"><b>BOTTOMS/DRESSES/SHORTS/SKIRTS/PANTS</b></p> <p>Solid Red, Black, White, Blue (no aqua/turquoise) or Khaki (Beige) or WISH Wear</p>
<p><b>OUTERWEAR- Jackets, sweatshirts, hooded sweatshirts, sweaters</b></p> <p>Solid Red, Black, White, or Blue or WISH Wear or College Wear</p>
<p><b>OUTERWEAR - Raincoats and Puffer Jackets - Only for Inclement Weather</b></p> <p>Any Color</p>
<p style="text-align: center;"><b>FOOTWEAR</b></p> <p>Closed-toed - No heels - No wheels</p>
<p>Socks of any kind may be worn any day of the week</p>
<p style="text-align: center;"><b>FACE COVERINGS</b></p> <p>Any Color or pattern (Optional)</p>
Modesty and Profanity Expectations
<p style="text-align: center;"><b>NOT PERMITTED</b></p> <ul style="list-style-type: none"> <li>- Bare Midriffs</li> <li>- Shoulder straps less than 1" in width</li> <li>- Tube Tops</li> <li>- Holes, Torn, or Ripped Clothing</li> <li>- Undergarments showing</li> <li>- Shorts/skirts/dresses with <u>less than 3-inch inseam or higher than mid-thigh</u></li> <li>- Crocs when students have PE class</li> </ul>
<p style="text-align: center;"><b>Clothing Containing Offensive Items Are Not Permitted</b></p> <ul style="list-style-type: none"> <li>- Slogans - Symbols - Suggestive or controversial designs - language</li> </ul>
<p style="text-align: center;"><b>Head Coverings</b></p> <ul style="list-style-type: none"> <li>- Head Coverings (hats, hoodies, beanies) <b>may</b> be worn outdoors to protect students from the weather</li> <li>- Head coverings <b>may not</b> be worn in any school building at any time except for religious purposes.</li> </ul>
Outside Logos (Other than WISH Logos)
<p>May not be larger than a fist</p>
<p>School-sponsored programs (MUN, Y&amp;G, CubeSAT, Student Council) and clubs and activities' logos are permitted as long as the clothing is Red, White, or Blue (HS includes Black)</p>



Dress Code Item
<p style="text-align: center;"><b>TOPS</b></p> <p style="text-align: center;">Solid Red, White, or Blue (no aqua/turquoise) or WISH Wear</p>
<p style="text-align: center;"><b>TOPS</b></p> <p style="text-align: center;">Solid Black or WISH Wear</p>
<p style="text-align: center;"><b>BOTTOMS/DRESSES/SHORTS/SKIRTS/PANTS</b></p> <p style="text-align: center;">Solid Red, White, Blue (no aqua/turquoise) or Khaki (Beige) or WISH Wear</p>
<p style="text-align: center;"><b>BOTTOMS/DRESSES/SHORTS/SKIRTS/PANTS</b></p> <p style="text-align: center;">Solid Black or WISH Wear</p>
<p><b>OUTERWEAR- Jackets, sweatshirts, hooded sweatshirts, sweaters</b></p> <p style="text-align: center;">College Wear (all colors)</p>
<p><b>OUTERWEAR- Jackets, sweatshirts, hooded sweatshirts, sweaters</b></p> <p style="text-align: center;">Solid Red, White, or Blue or WISH Wear</p>
<p><b>OUTERWEAR- Jackets, sweatshirts, hooded sweatshirts, sweaters</b></p> <p style="text-align: center;">Solid Black or WISH Wear</p>
<p><b>OUTERWEAR - Raincoats and Puffer Jackets - Only for Inclement Weather</b></p> <p style="text-align: center;">Any Color</p>
<p style="text-align: center;"><b>FOOTWEAR</b></p> <p style="text-align: center;">Closed-toed - No heels - No wheels</p>
<p style="text-align: center;">Socks of any kind may be worn any day of the week</p>
<p style="text-align: center;"><b>FACE COVERINGS</b></p> <p style="text-align: center;">Any Color or pattern (Optional)</p>
Modesty and Profanity Expectations
<p style="text-align: center;"><b>NOT PERMITTED</b></p> <ul style="list-style-type: none"> <li>- Bare Midriffs</li> <li>- Shoulder straps less than 1" in width</li> <li>- Tube Tops</li> <li>- Holes, Torn, or Ripped Clothing</li> <li>- Undergarments showing</li> <li>- Shorts/skirts/dresses with <u>less than 3-inch inseam or higher than mid-thigh</u></li> <li>- Crocs when students have PE class</li> </ul>
<p style="text-align: center;"><b>Clothing Containing Offensive Items Are Not Permitted</b></p> <ul style="list-style-type: none"> <li>- Slogans - Symbols - Suggestive or controversial designs - language</li> </ul>
<p style="text-align: center;"><b>Head Coverings</b></p> <ul style="list-style-type: none"> <li>- Head Coverings (hats, hoodies, beanies) <b>may</b> be worn outdoors to protect students from the weather</li> <li>- Head coverings <b>may not</b> be worn in any school building at any time except for religious purposes.</li> </ul>
Outside Logos (Other than WISH Logos)
<p style="text-align: center;">May not be larger than a fist</p>
<p>School-sponsored programs (MUN, Y&amp;G, CubeSAT, Student Council) and clubs and activities' logos are permitted as long as the clothing is Red, White, or Blue (HS includes Black)</p>

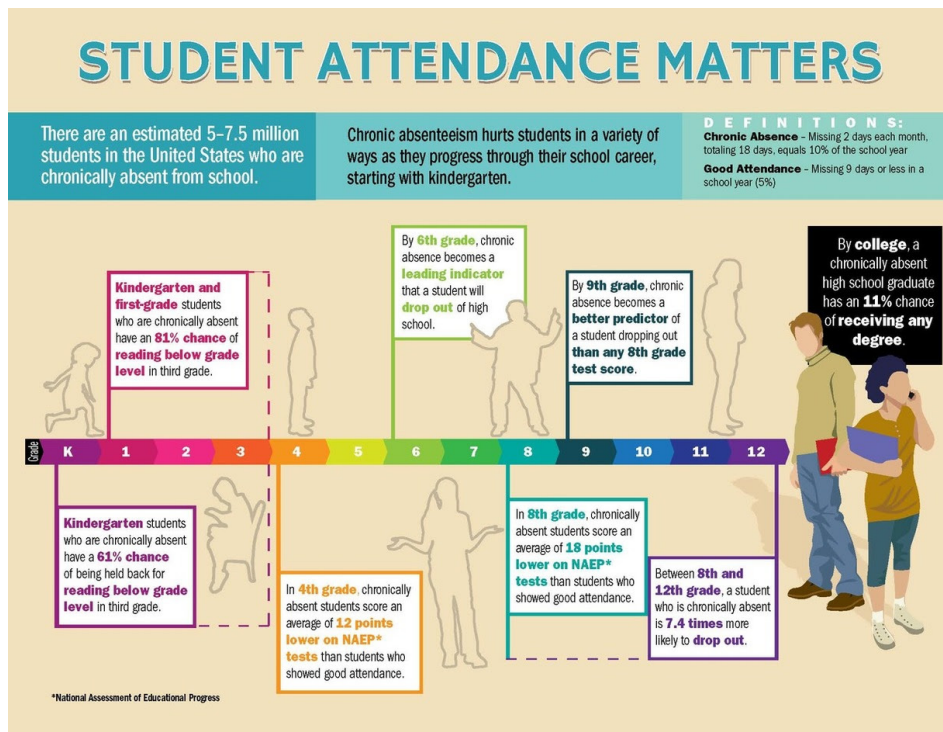


## Attendance Policy and Expectations

### THE WISH EXPECTATION IS THAT EACH STUDENT MAINTAINS A 96% RATE

- 96% attendance is fewer than 1 absence per month & fewer than 7 absences per year.
- Students who miss 10% of school days are considered Chronically Absent by Federal Standards. This includes excused and unexcused absences.
- Students who miss 3 days of school without a valid excuse will be considered Truant.

WISH Academy High School holds high expectations for each and every student because we recognize how important it is for students to show up every day on time, ready to learn in order to reach their maximum potential. One of the best environments for learning is in person, with teachers engaging students in lessons and hands-on projects, and students working side-by-side with peers. In fact, studies have shown a direct correlation between student attendance and student achievement -- the more a child is at school, the higher their grades, the deeper their understanding of the material, and the better their social skills. A day or two may not matter, but a student's performance drastically declines with consistent absences.





Additionally, **Education code 48200** mandates compulsory full time education for every child between the ages of 6 and 18. This means that children are expected to attend school each day it is in session, and remain on campus until school has been dismissed. WISH Academy, like every school in California, is required to track the attendance of all enrolled students and follow up with families whose children are frequently missing school.

Absences, either expected or unexpected, should be communicated with the WISH office staff either via our online notification system or via a phone call to our office staff. Our office will send out email notifications of absences daily, as well as daily robocalls regarding a student's absence.

We do understand that not all absences can be avoided. Please note the following excusable and un-excusable absence reasons:

### **Excusable Absence**

1. Illness absence with a doctor's note, authorization by school nurse, other authorized school official, or parent/guardian note.
2. Exclusion from school supported by written documentation by nurse or other designated school official.
3. Medical appointments verified by a written note from a doctor or parent/guardian note.
4. Quarantine of the home; verified by the health department.
5. Funeral due to the death of a member of the student's immediate family (1 day, within the state; 3 days, outside the state).
6. Student's appearance in court verified by court note or parent/guardian note.
7. Absences for justifiable personal reasons with prior written request and written approval from the principal; such as observance of a holiday, religious ceremony/retreat, college or job interview.

### **Unexcused Absence**

1. Unverified illness (no note was provided)
2. Vacations/Trips
3. Babysitting
4. Care of Parent/Parent illness
5. Running errands for family
6. Runaway
7. Unspecified Family Emergency
8. Inclement Weather
9. Missed bus/transportation
10. Court appointment of parent/guardian



## Please Note

- WISH will require a doctor's note for any illness related absence of longer than 3 days.
- Excessive use of parent/legal guardian notes may result in the school requesting additional documentation for all future absences. Unexcused absences may be considered truancies.
- Please endeavor to make medical and dental appointments outside school hours. If a student is absent due to a medical or dental appointment, a note from the doctor/dentist will be required for the absence to be excused.

*Further attendance information is provided in the Attendance Handbook and the Family Handbook which will be available during Orientation.*

# ATTEND TODAY, ACHIEVE TOMORROW

## GOOD SCHOOL ATTENDANCE MEANS...



### ELEMENTARY STUDENTS

read well by the end of third grade



### MIDDLE SCHOOLERS

pass important courses



### HIGH SCHOOLERS

stay on track for graduation



### COLLEGE STUDENTS

earn their degrees



### WORKERS

succeed in their jobs

Too many absences—excused or unexcused—can keep students from succeeding in school and in life. How many are too many? 10% of the school year—that's 18 missed days or 2 days a month—can knock students off track.

# REGULAR SCHEDULE

High School Regular Day	
<i>(Monday, Wednesday, Friday)</i>	
<i>Dismissal at 3:45pm</i>	
Period	Time
Period 0	7:55am - 8:27am
Period 1/2	8:30am - 9:55am
Period 3/4	10:00am-11:20am
Nutrition	11:20am - 11:30am
Period 5/6	11:35am - 1:00pm
Lunch	1:00pm - 1:35pm
Period 7/8	1:40pm - 3:00pm
Advisory	3:05pm - 3:45pm

High School Early Dismissal Thursday		
<i>Dismissal at 2:15pm</i>		
Period	Time	Length
Period 0	7:55am - 8:27am	33 Min
Period 1	8:30am-9:07am	37 Mins
Period 2	9:12am-9:44am	32 Mins
Period 3	9:49am-10:21am	32 Mins
Nutrition	10:21am-10:31am	10 Mins
Period 4	10:36am-11:08am	32 Mins
Period 5	11:13am-11:45am	32 Mins
Period 6	11:50am-12:22pm	32 Mins
Lunch	12:22pm-12:52pm	30 Mins
Period 7	12:57pm-1:30pm	33 Mins
Period 8	1:35pm-2:10pm	35 Mins

Regular Day	
<b>TUESDAYS ONLY</b>	
<i>Dismissal at 3:45pm</i>	
Period	Time
Period 0	7:55am - 8:27am
Period 2	8:30am - 9:55am
Nutrition	9:55am-10:05am
Period 4	10:10am-11:30am
Period 6	11:35am - 1:00pm
Lunch	1:00pm - 1:35pm
Period 8	1:40pm - 3:00pm
Advisory	3:05pm - 3:45pm



**WISH ACADEMY HIGH SCHOOL**

**2023-24 School Calendar**

	M	T	W	T	F	M	T	W	T	F	M	T	W	T	F	M	T	W	T	F	M	T	W	T	F	Total Days								
July 2023		Indep. Day	ESY & Summer School			ESY & Summer School					Summer Break					Summer Break																		
August		1	Prof. Dev.			Prof. Dev.				Orientation	1st Day															14								
September					No School	Labor Day		BTSN			PALI RETREAT									No School						18								
October						Parent-Teacher Conferences Out at 2:15pm									Q1 End	Q2 Start							Short Day				22							
November				Exhibitions						Vets Day										Fall Break									16					
December											SEMESTER 1 EXAMS							Aca Sem & Q2 End	Short Day	Winter Break	Winter Break									15				
January 2024	Winter Break					Prof. Dev.	Q3 Start				MLK Holiday														16									
February															Pres. Day														20					
March																				Parent-Teacher Conferences Out at 2:15pm					Spring Break									16
April	Spring Break										Presentations of Learning							No School												16				
May															SENIOR EXAM WEEK					Short Day	Memorial Day	SEMESTER 2 EXAMS									22			
June				Aca Sem & Q4 End	Short Day/ Graduation	Prof. Dev.		Summer Break			ESY &	Juneteenth	Summer School			ESY & Summer School										5								
July 2024	ESY & Summer School			Indep. Day		ESY & Summer School					Summer Break					Summer Break					Summer Break													
	Total Days of Instruction																									180								
	Short Day - School Out at 1:00pm					Minimum Day, school ends at 2:15pm					Academic Semester Ends																							
	<b>SPECIAL EVENTS</b>					<b>HOLIDAYS AND PUPIL-FREE DAYS</b>																												
	Orientation: August 11, 2023					Professional Development: August 1-11, 2023					Martin L. King Day: January 15, 2024																							
	Back to School Night (BTSN): September 6, 2023					Admission Day: September 1, 2023					Presidents' Day: February 19, 2024																							
	PALI Retreat (9th Grade): September 13-15, 2023					Labor Day: September 4, 2023					Armenian Genocide: April 24, 2024																							
	Parent-Teacher Conferences: October 9-13, 2023					No School: September 25, 2023					Memorial Day: May 27, 2024																							
	EXHIBITIONS: November 2, 2023					Veteran's Day (Observed): November 10, 2023					Professional Development: June 10, 2024																							
	Parent-Teacher Conferences: March 18-22, 2024					Fall Break: November 20-24, 2023					Professional Development: June 11, 2024																							
	Presentations of Learning: April 15-19, 2024					Professional Development: January 8, 2024					Juneteenth: June 19, 2024																							
	PROM: April 27, 2024					Academic Semester 1: Aug 14 - Dec 21, 2023					Q1: Aug 14 - Oct 20, 2023					Q2: Oct 23 - Dec 21, 2023																		
	Graduation: June 7, 2024					Academic Semester 2: Jan 9 - June 7, 2024					Q3: Jan 9 - Mar 15, 2024					Q4: Mar 18 - Jun 7, 2024																		
	Winter Break: Dec 22, 2023 - Jan 5, 2024					Spring Break: March 25 - April 5, 2024					Summer Break: Starts June 10, 2024																							
	Semester 1 Exams: 12/11/23 - 12/15/23					Semester 2 Exams: 5/28/24 - 5/31/24					Senior Exam Week: 5/20/24 - 5/24/24																							
	Extended School Year (ESY)																																	